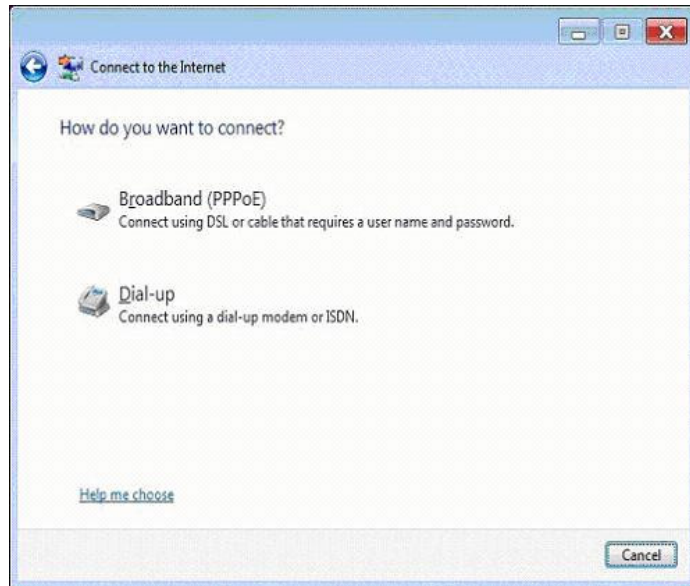


Internet Connection Wizard

1. Click on the “Start” button and select “Control Panel”. Then click on “Network and Internet” and select “Internet Option” move to the “Connections” tab and click on the “Setup” button at the top of the screen. You will see the following screen. Press “Dial-up” to continue.

**PR WebMasters
(PRW.NET)**
PO Box 9111
San Juan, PR 00908

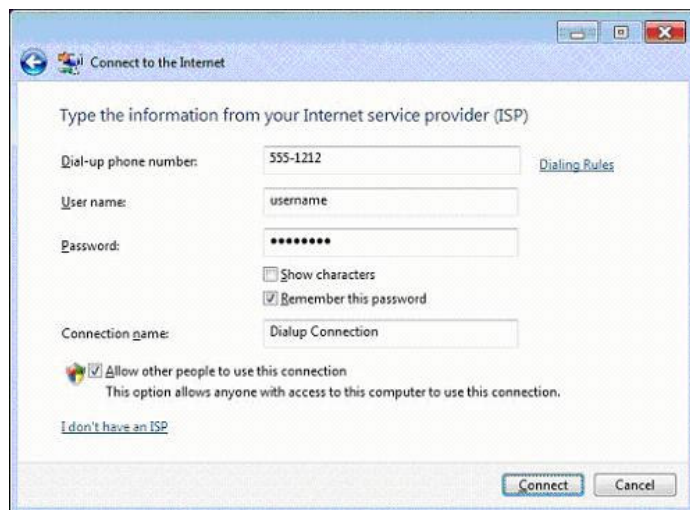
Tel. (787) 723-5000
Fax (787) 722-6242
Toll Free 1-866-723-6800
Support (787) 641-9800
Toll Free 1-866-641-0800



2. Enter the access number depending on your area or service according to the Access Number List (see next page for the telephone numbers). Type the username and password you selected in the application form. Enter “PRW” as the connection name. Make sure the last box are check.

Select “Connect” on the following screen to complete the Dialup configuration.

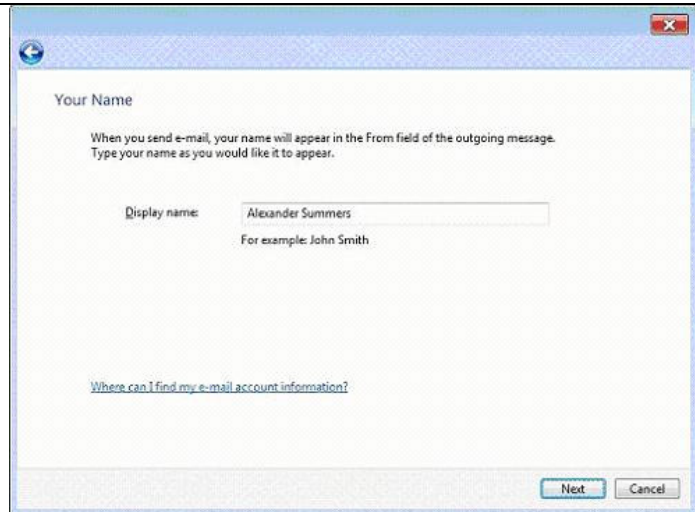
NOTE: You are responsible for determining the appropriate number for your location. ISP is not responsible for any long distance telephone charges.



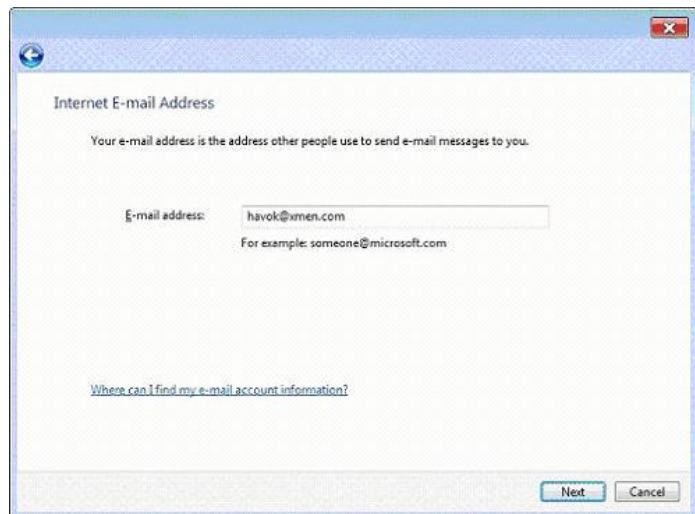
Email Setup

1. In Windows Mail click on “Tools” and select “Accounts” from the menu. Then click on “Add”.

Enter the name you would like to use for email and click “Next”. Most people select their first name and last names. You can also choose a nickname or your family name (E.g. Familia Perez).

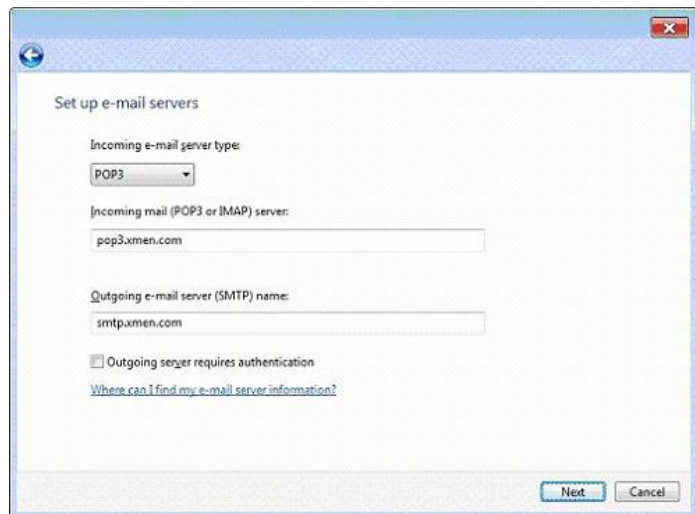


2. Enter your email address and click “Next”. The format is username@prw.net where username is the user name you selected in the application form. Note that these should be in lower case.

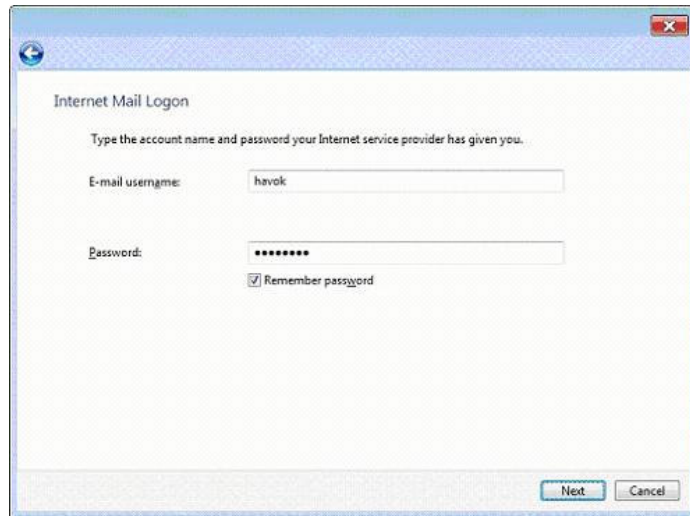


3. Enter the server names shown below and click “Next”. If you would to use IMAP on server type, enter imap.prw.net for your incoming mail server. Note that these should be in lower case.

Incoming: pop.prw.net
Outgoing: smtp.prw.net



4. Enter the account name and password you selected on the application form and click “Next”. Note that these should be in lower case.

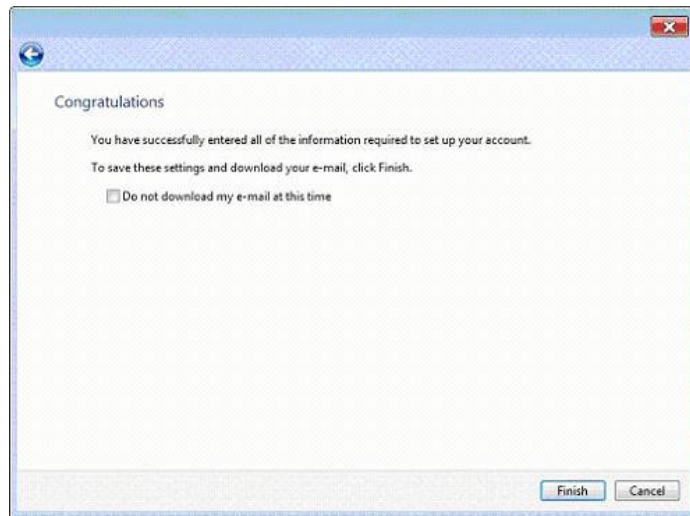


The screenshot shows a dialog box titled "Internet Mail Logon". It contains the following text and fields:

- Instruction: "Type the account name and password your Internet service provider has given you."
- Field: "E-mail username:" with the value "havok" entered.
- Field: "Password:" with a masked password of "*****".
- Checkbox: "Remember password" which is checked.
- Buttons: "Next" and "Cancel" at the bottom right.

5. Select “Finish” ending the Wizard and then clicking “Close”, to exit the Internet Accounts Window.

You are now ready connect to the Internet. If you have any problems please make a note of any error messages and contact our support department at 787-641-9800 or 1-866-641-0800



The screenshot shows a dialog box titled "Congratulations". It contains the following text and fields:

- Message: "You have successfully entered all of the information required to set up your account. To save these settings and download your e-mail, click Finish."
- Checkbox: "Do not download my e-mail at this time" which is unchecked.
- Buttons: "Finish" and "Cancel" at the bottom right.

General Setup Parameters

Access Numbers					
	Analog	ISDN		Analog	ISDN
Adjuntas	939-201-9000	939-201-9200	Lajas	939-214-9000	939-214-9200
Aguada	787-589-9050	787-589-9200	Lares	787-563-9000	787-563-9200
Aguadilla	787-658-9000	787-658-9200	Las Marías	939-394-9000	939-394-9200
Aguas Buenas	787-924-9000	787-924-9200	Las Piedras	787-912-9000	787-912-9200
Aibonito	787-954-9000	787-954-9200	Loiza 256/957	787-957-9000	787-957-9200
Añasco	787-229-9000	787-229-9200	Luquillo	787-355-9000	787-355-9200
Arecibo	787-650-9000	787-650-9200	Manatí	787-621-9000	787-621-9200
Arroyo	939-307-9000	939-307-9200	Maricao	939-910-9000	939-910-9200
Barceloneta	787-623-9000	787-623-9200	Maunabo	939-329-9000	939-329-9200
Barranquitas	787-947-9000	787-947-9200	Mayagüez	787-652-9000	787-652-9200
Cabo Rojo	787-357-9000	787-357-9200	Moca	787-551-9000	787-551-9200
Caguas	787-653-9000	787-653-9200	Morovis	787-369-9000	787-369-9200
Camuy	787-544-9000	787-544-9200	Naguabo	787-465-9000	787-465-9200
Canóvanas	787-957-9000	787-957-9200	Naranjito	787-227-9000	787-227-9200
Cayey	787-535-9000	787-535-9200	Orocovis	939-212-9000	939-212-9200
Ceiba	787-534-9000	787-534-9200	Patillas	939-307-9000	939-307-9200
Ciales	787-917-9000	787-917-9200	Peñuelas	787-928-9000	787-928-9200
Cidra	787-434-9000	787-434-9200	Ponce	787-651-9000	787-651-9200
Coamo	787-471-9000	787-471-9200	Quebradillas	787-291-9000	787-291-9200
Comerio	787-695-9000	787-695-9200	Rincón	939-697-9000	939-697-9200
Corozal	787-693-9000	787-693-9200	Rio Grande	787-657-9000	787-657-9200
Culebra	787-952-9000	787-952-9200	Sabana Grande	787-978-9000	787-978-9200
Dorado	787-626-9000	787-626-9200	Salinas	787-537-9000	787-537-9200
Fajardo	787-655-9000	787-655-9200	San Germán	787-659-9000	787-659-9200
Florida	939-440-9000	939-440-9200	San Juan	787-641-9000	787-641-9200
Guánica	787-569-9000	787-569-9200	San Lorenzo	787-937-9000	787-937-9200
Guayama	787-686-9000	787-686-9200	San Sebastián	787-926-9000	787-926-9200
Guayanilla	787-927-9000	787-927-9200	Santa Isabel	787-971-9000	787-971-9200
Gurabo	787-687-9000	787-687-9200	Toa Alta	787-545-9000	787-545-9200
Hatillo 262/989	787-544-9000	787-544-9200	Utua	787-933-9000	787-933-9200
Hormigueros	787-935-9000	787-935-9200	Vega Alta	787-915-9000	787-915-9200
Humacao	787-656-9000	787-656-9200	Vega Baja	787-654-9000	787-654-9200
Isabela	787-609-9000	787-609-9200	Vieques	787-968-9000	787-968-9200
Jayuya	787-588-9000	787-588-9200	Villalba	939-731-9000	939-731-9200
Juana Díaz	787-580-9000	787-580-9200	Yabucoa	787-953-9000	787-953-9200
Juncos	787-561-9000	787-561-9200	Yauco	787-992-9000	787-992-9200

NOTE: You are responsible for determining the appropriate number for your location. ISP is not responsible for any long distance telephone charges.

Parameter	Value
Name Servers	208.249.78.2 208.249.78.3
Incoming Mail (POP3) Server	pop.prw.net
Incoming Mail (IMAP) Server	imap.prw.net
Outgoing Mail (SMTP) Server	smtp.prw.net
News Server	news.prw.net
Main Web Server	www.prw.net
Public FTP Server	ftp.prw.net
User Mail Address	username@prw.net
IP Address	Dynamic (set by server)
Netmask	255.255.255.0
User Web Directory (Public)	home.prw.net/~username username.web.prw.net
User Web Directory	home.prw.net /home/username/html